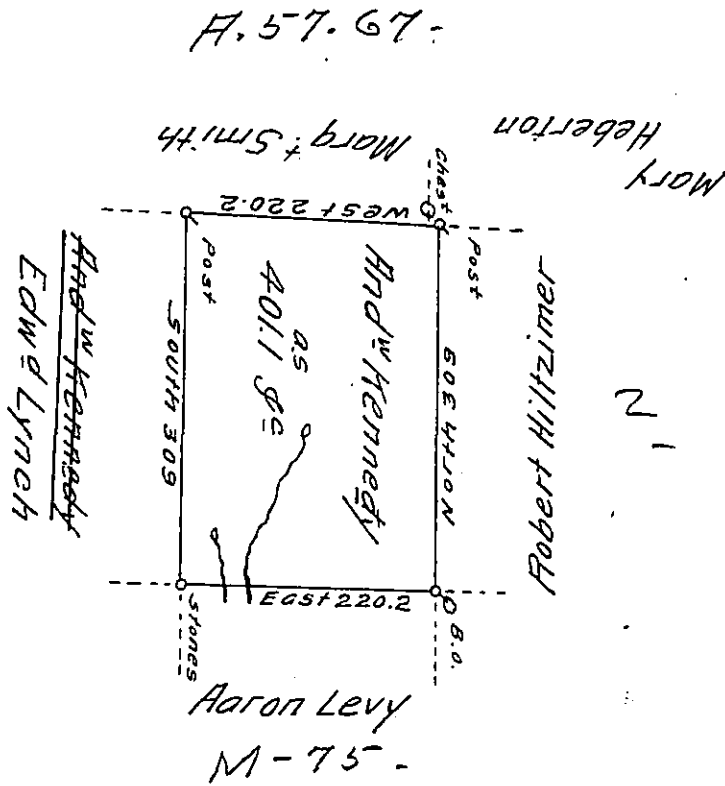


Foster -
Luzerne.

M-76-



A Draft of a tract of land Called — Situate Joining land surv^d
 for Edw^d Lynch & others in the County of Northum^d. Containing
 four hundred and one Acres and one tenth and Allow^e Surv^d
 for And^w Kennedy the ~~10~~⁶th day of Sep^r 1793 by Virtue of a Warrant
 dated the 13th day of June 1793.

by W^m Gray D. S.

Daniel Brodhead Esq^r }
 Surv^r Gen^l }

IN TESTIMONY that the above is a copy of the original remaining on file in
 the Department of Internal Affairs of Pennsylvania, made
 conformably to an Act of Assembly approved the 16th day of
 February, 1833, I have hereunto set my Hand and caused
 the Seal of said Department to be affixed at Harrisburg,
 this fifteenth day of February 1912.

Nancy Howell
 Secretary of Internal Affairs.